

## Features

### Database of more than 2800 nuclides

#### Radioactivity

Calculate future and past radioactivity for any nuclide in the database.

#### Dose rates and shielding

Calculate dose rates for any nuclide, at any distance, for any activity/mass and with various types of shielding in place.

'Capped' dose calculations:

*Compute the activity, distance, time or shield thickness needed for a specified dose rate.*

Calculate and apply shielding build-up factors.

Calculate beta emission dose rates.

#### Photon attenuation coefficients database

#### Radiological units conversion

Including radon quantity conversions.

#### Serial decay

Display and print nuclide decay series.

Calculate daughter radioactivities.

Calculate maximum daughter 'in-growth' times.

#### X-ray sets

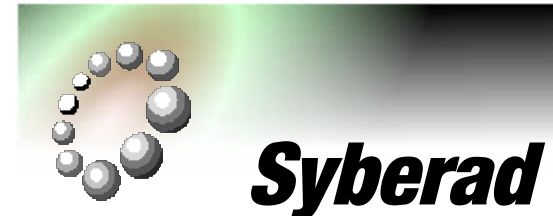
Calculate dose rates for tube voltage, current and distance.

Calculate attenuation in shielding materials.

#### Integrated algebraic scientific calculator

#### On-line help and radiation tutorials

#### Hypertext version of the Ionising Radiations Regulations 1999 (UK only)



New .....

## The Health Physicist's Companion

### RADIATION SAFETY



Syberad Limited  
55 Southbank Road  
Southport  
Merseyside. PR8 6QN

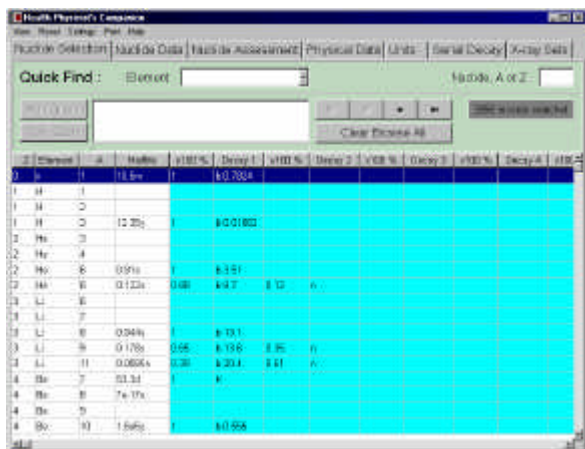
Tel: 01704 541443  
Mobile: 07900 304673  
Fax: 0870 7051490  
enquiries@syberad.co.uk  
www.syberad.co.uk

**SOFTWARE SOLUTIONS  
FOR  
PROFESSIONALS**

Ó Syberad Ltd

**At last!**  
**An easy-to-use calculator for**  
**Radiation Protection Professionals**

Radiation protection advisers need fast access to accurate radionuclide and X-ray set data when preparing advice for clients.



The Nuclide Selection Page

Until now, this information has not been available in one resource. Most radiation protection advisers have a collection of information resources, from their favourite text books, that they used at college, to rules of thumb developed through the course of their careers.

But now there's **Syberad's Health Physicist's Companion**. An easy-to-use software tool that provides radiation protection advisers with the information they need, at a price they can afford.

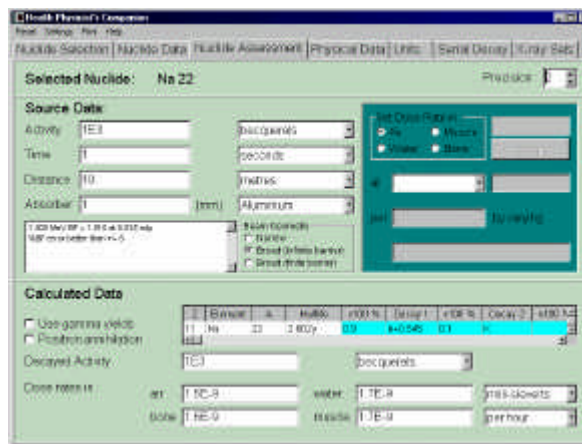
We are confident that, once you have installed **Syberad's Health Physicist's Companion**, you will want to keep it.

**TRY IT NOW .....**  
 Use the evaluation CD-ROM included with this promotional leaflet.

**Dose Calculations**

Select any one of the thousands of nuclides in the database and then complete dose rate and shielding calculations.

Enter an activity and decay time to compute decayed activity; you can even enter a negative time value to calculate historical source radioactivities. Enter a distance and optional shield material and thickness to compute dose rates, in the radiological units of your choice.

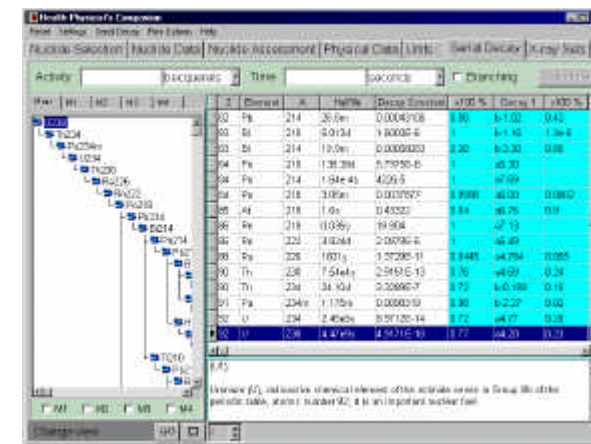


The Nuclide Assessment Page

**Radioactive Decay Series**

Display decay series. Compute daughter radioactivities and print the results.

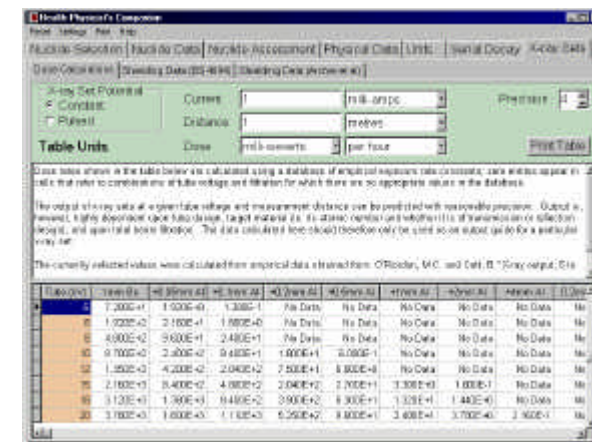
Calculate the time taken for decay daughters to reach their maximal activity values.



The Serial Decay Page

**X-ray Dose Rates and Shielding**

Compute x-ray set dose rates and attenuation for tube voltage, current and operating distance.



The X-ray Sets Page